

191 Abbey Foregate, Abbey Foregate, Shrewsbury,  
Shropshire, SY2 6AH

[www.hbshrop.co.uk](http://www.hbshrop.co.uk)



**Important Notice - please read carefully**

All rents, premiums or other financial arrangements and charges stated are exclusive of value added tax. The Property Misdescriptions Act Holland Broadbridge for themselves and for the vendors or lessors of this property whose agents they are give notice that:

1. These particulars are set out as a general outline only for the guidance of intended purchasers or lessors and do not constitute part of an offer or contract.
2. All descriptions, dimensions, reference to condition and necessary permissions for use and occupation, and other details are given without responsibility and any intending purchasers or tenants should not rely on them as statements or representations of fact but must satisfy themselves by inspection or otherwise as to the correctness of each term of them.
3. The vendors or lessors do not make or give, and neither do Holland Broadbridge for themselves nor any person in

**Offers In The Region Of £490,000**

Viewing: strictly by appointment  
through the agent

A rare opportunity has arisen to acquire this most attractive, beautifully presented, versatile and significantly improved Grade II listed four double bedroom mid-terrace townhouse.

This exceptional home offers spacious and flexible accommodation arranged over five floors, making it perfectly suited to modern family living. The current owners have thoughtfully enhanced the property to create a stylish yet welcoming interior, finished to an exceptionally high standard while retaining its wealth of character and period charm.

Occupying a sought-after position on Abbey Foregate, one of Shrewsbury's most desirable and historic residential locations, the property enjoys the perfect balance of character and convenience. A wide range of local amenities are within easy walking distance, together with the historic town centre, picturesque riverside walks and the beautiful Quarry Park. Excellent transport links, including Shrewsbury railway station and major road connections, are also readily accessible.

Early viewing is highly recommended by the selling agent to fully appreciate the quality, versatility and superb location of this outstanding home.

**The accommodation briefly comprises**

- \* GROUND FLOOR- dining room, inner hallway, recently refitted kitchen/breakfast room, lounge with feature bi-folding doors.
- \* BASEMENT- inner hallway, bedroom, modern refitted bathroom.
- \* FIRST FLOOR LANDING - bedroom, modern refitted bathroom, useful store/walk-in wardrobe.
- \* SECOND FLOOR LANDING- two double bedrooms.
- \* THIRD FLOOR- useful attic area/study area
- \* OUTSIDE - Southerly facing rear enclosed gardens. highly sought after residential location.
- \* NO UPWARD CHAIN.

**The accommodation in greater detail comprises**

Wooden entrance door with decorative glazed window above gives access to:

**Dining room**

12'5 x 9'10

Having period style coal effect fireplace with decorative tiled slips and wooden surround, secondary double glazed sash window to front, recessed spotlights to veiling, exposed wooden flooring, radiator.

Part glazed wooden door from dining room gives access to:

**Inner hallway**

Having exposed wooden flooring, recessed spotlights to ceiling.

Part glazed door from inner hallway gives access to:

**Recently refitted kitchen/breakfast room**

12'3 x 9'0

Having a range of attractive eye level and base units with built-in cupboards and drawers, fitted worktops with inset stainless steel sink drainer unit with mixer tap over, four ring induction hob with concealed cooker canopy over, integrated oven, microwave combination oven, fridge and freezer, exposed wooden flooring, tiled splash surrounds, recessed spotlights to ceiling

Square arch from refitted kitchen/breakfast room give access to:

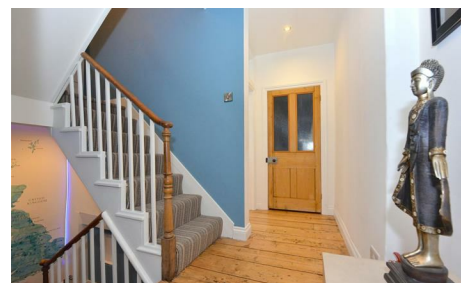
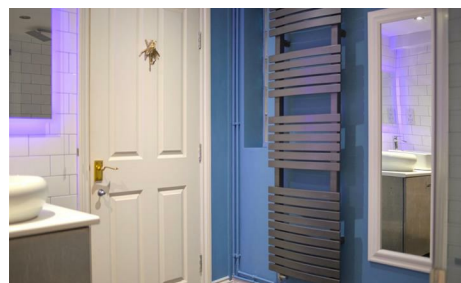
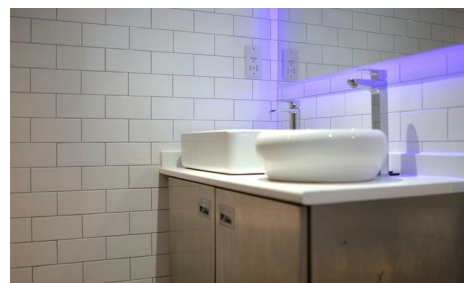
**Lounge**

12'5 x 11'5 excluding recess

Having bi-folding double glazed doors giving access to rear gardens, glazed roof window with remote control electric blind, exposed wooden flooring, recessed spotlights to ceiling, wall mounted contemporary radiator.

From inner hallway staircase descends down to





**Basement inner hallway**

Having understairs storage cupboard, radiator, recessed spotlights to ceiling, shelved storage cupboard with space and plumbing for washing machine, radiator.

From basement inner hallway doors give access to: Bedroom and refitted bathroom.

**Bedroom**

11'3 excluding recess x 9'10

Having two sealed unit double glazed windows, exposed timbers to ceiling, radiator.

**Refitted bathroom**

Having a modern white suite comprising: P shaped panel bath with drench shower over plus hand-held shower attachment off with glazed shower screen to side, low flush WC, vanity unit with square and circular wash hand basins with mixer taps over, shaver point, part tiled to walls, tiled floor, wall hung heated towel rail.

From inner hallway stairs rise to:

**Half landing**

From half landing stairs rise to:

**First floor landing**

Having exposed wooden flooring, recessed spotlights to ceiling, useful walk-in store/wardrobe. From first floor landing panel and part glazed doors give access to: Bedroom and refitted bathroom.

**Bedroom**

12'8 x 10'3

Having secondary double glazed window with a pleasing aspect to front towards the Abbey, exposed wooden flooring, radiator, picture rail.

**Refitted bathroom**

Having a modern four piece suite comprising: P shaped panel bath with drench shower over plus hand-held shower attachment off with glazed shower screen to side, low flush WC, two wall hung wash hand basins with storage drawers below and mixer tap over, radiator, exposed wooden flooring glazed sash window to rear, recessed spotlights to ceiling, part to tiled to walls, wall hung heated towel rail.

From first floor landing stairs rise to:

**Half landing**

Having fitted shelving and storage cupboards. From half landing stairs rise to:

**Second floor landing**

Having exposed wooden flooring, recessed spotlights to ceiling.

Panel doors then give access to: Two bedrooms

**Bedroom**

12'6 x 10'3

Having glazed sash window to front with a pleasing aspect to the Abbey, period fireplace, exposed wooden flooring, radiator.

**Bedroom**

12'7 x 9'5

Having glazed sash window to rear, radiator, period fireplace, exposed wooden flooring.

From second floor landing stairs rise to:

**Useful attic area/study area**

18'0 max into eaves x 10'1

Having restricted head height with sloping ceilings, Velux roof window.

**Outside**

To the front of the property there are low maintenance stone section screening from the road by brick walling and wrought iron railings, steps then give access to front door.

**Rear garden**

The rear garden of the property comprises: Timber decked area, artificial lawn garden, timber garden shed, outside lighting points, outside cold tap and heater. The rear gardens are enclosed by brick walling and offer gated pedestrian rear access and a southerly facing aspect.

**Services**

Mains water, electricity, drainage and gas are all understood to be available to the property. None of these services have been tested. If there is a telephone installed it will be subject to British Telecom regulations.

**COUNCIL TAX BAND C**

**Tenure**

We are advised that the property is freehold but this has not been verified and confirmation will be forthcoming from the vendor's solicitors during pre-contract enquiries.

**Mortgage services**

We offer a no obligation mortgage service through our in house Independent Financial Advisor. Telephone our Office for further details 01743 357 000 (OPTION 1 SALES).

**Referral fee disclaimer**

Guidance from the Consumer Protection from Unfair Trading Regulations 2008 requires the Estate Agency sector to address the issue of transparency of fees.

Holland Broadbridge refers clients to carefully selected local service companies, as we believe you may benefit from using their services. You are under no obligation to use the services of any of the recommended companies, though if you accept our recommendation the provider is expected to pay us a referral fee.

**Disclaimer**

Any areas / measurements are approximate only and have not been verified.  
VACANT POSSESSION WILL BE GIVEN ON COMPLETION.

